

## Quartz Heat Lamp Assemblies



The stylish and functional Roband quartz heat lamp assemblies provide a balance of heat and light to front or back of house applications. They are manufactured from extruded anodised aluminium, with a number of different sizes and options available to suit various requirements. All models come with a standard mount bracket. Optional mount kit is also available.

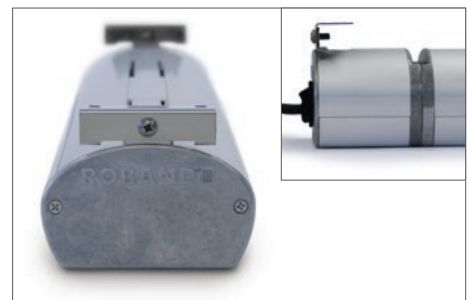
**See page 27 for details.**

Designed by Roband Australia, Easy Fit Globes feature a protective quartz outer layer that encapsulates the inner globe allowing for easier handling. This secondary layer of glass also protects food from globe breakages by capturing the shards and eliminating the need for a traditional glass window in the base of the cover. Lamp replacement can now be performed without the need for an electrician and takes only seconds.

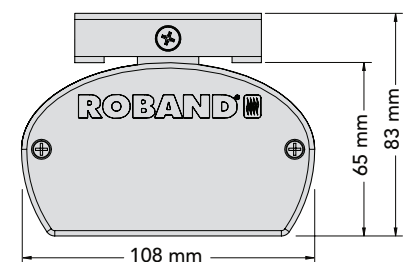
Showing wire guard open for easy replacement of the globe



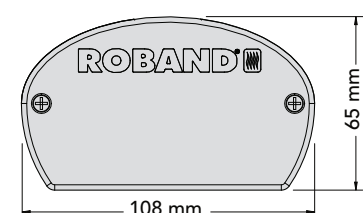
Standard mounting bracket available on standard and fabricator models



Dimensions for standard quartz lamps and fluorescent lighting assemblies (HQ & HF).



Dimensions for fabricator quartz lamps and infra-red heating assemblies (HUQ & HUE).



### Standard Models

The standard heat lamp assemblies (e.g. HQ450E) come **with** a control box that houses the isolating on/off switch. They also feature a simple mounting system and come complete with a 10 Amp plug and cord.

### Fabricator Models

The heat lamp assemblies are also available **without** the control box and on/off switch (e.g. HUQ375E) so they can be connected to a remote switch setup. The removal of the control box shortens the length of the lamp assembly accordingly.

# Quartz Heat Lamp Assemblies

## SPECIFICATIONS - STANDARD MODELS (INCLUDES CONTROL BOX)

MODEL	INTERNAL LAMPS	MOUNT TYPE	CURRENT Amps	POWER Watts	LENGTH mm	LAMP CENTRES*	INCLUSIONS
HQ450E	1 lamp	Standard	1.5	350	450	N/A	Switch, plug & cord
HQ900E	2 lamps	Standard	3.0	700	900	400	Switch, plug & cord
HQ1200E	3 lamps	Standard	4.6	1050	1200	345	Switch, plug & cord
HQ1500E	4 lamps	Standard	6.1	1400	1500	345	Switch, plug & cord
HQ1800E	4 lamps	Standard	6.1	1400	1800	400	Switch, plug & cord
HQ2100E	5 lamps	Standard	7.6	1750	2100	400	Switch, plug & cord

\*Length between centre of each lamp.



HQ1200E pictured

## SPECIFICATIONS - FABRICATOR MODELS (NO CONTROL BOX)

MODEL	INTERNAL LAMPS	MOUNT TYPE	CURRENT Amps	POWER Watts	LENGTH mm	LAMP CENTRES*	INCLUSIONS
COMPLETE WITH A, N & E WIRE IN PTFE 1500 MM LENGTH FOR INSTALLATION TO YOUR OWN CONTROLLER							
HUQ375E	1 lamp	Standard	1.5	350	375	N/A	N/A
HUQ825E	2 lamps	Standard	3.0	700	825	400	N/A
HUQ1125E	3 lamps	Standard	4.6	1050	1125	345	N/A
HUQ1425E	4 lamps	Standard	6.1	1400	1425	345	N/A
HUQ1725E	4 lamps	Standard	6.1	1400	1725	400	N/A
HUQ2025E	5 lamps	Standard	7.6	1750	2025	400	N/A

\*Length between centre of each lamp.



HUQ1125E pictured

## Optional Mount Kit

Mount kit for Quartz and Infra-red series assemblies. The kit includes 2 x 19 mm diameter round tubes, inserts and mounting brackets, with instructions for installation by an electrician. 600 mm tubes can be cut to the desired length.



## SPECIFICATIONS

MODEL	DESCRIPTION	MOUNT TYPE	LENGTH (mm)
HM600	Mount kit for all Quartz lamps and Infra-red heat assemblies.	Round	600



Fabricator model with HM600 mount kit installed and shortened to the desired length